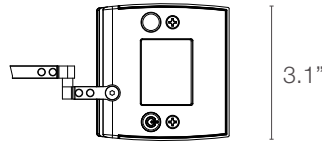
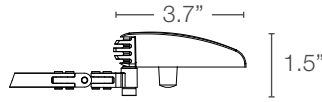
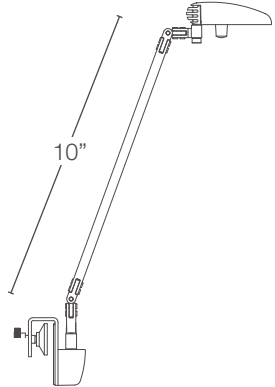


COLOUR FINISHES

- WHITE
- SILVER
- BLACK

DIMENSIONS



SPECIFICATIONS

ENERGY CONSUMPTION: 4.2 system watts

NUMBER OF LEDs: 7 fractional LEDs

LIGHT OUTPUT: 200 lumens
52 Lm/W

LED RATED LIFESPAN: 50,000 hours

COLOR TEMPERATURE: 3500K

COLOR RENDERING INDEX: 82

DIMMING: touch-and-hold

BRIGHTNESS ADJUSTABILITY: 100%–15% continuous

OCCUPANCY SENSOR: powers off after 30 minutes of inactivity

ARM OPTIONS: single arm

STANDARD COLOR FINISH: white, silver, black

MATERIAL: aluminum, zinc, plastic

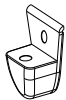
POWER SUPPLY: 18 watt wall transformer with 9' black cord

CORD: 4' silver cord with quick connector

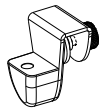
CERTIFICATIONS: ETL listed, compliant to UL 153, TAA, BAA CEC Title 20
CSA C22.2 #12

WARRANTY: 10 years fixture
5 years power supply

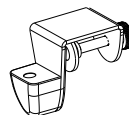
ACCESSORIES



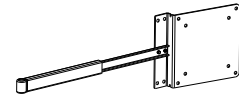
Accessory Mount
(1/4" to 3/8" thickness)



Divider Mount 1
(1/4" to 3/8" thickness)



Divider Mount 2
(1/2" to 1 1/2" thickness)



Monitor Mount
(15" - 27" Monitors)

ENVIRONMENTAL

- Material content recyclability by weight:
 - Aluminum - 11.86%
 - Iron - 81%
 - Zinc - 0.96%
 - Plastic - 0.22%
 - Steel - 2.05%
 - Non-recyclable electronic content - 3.91%
- Contains 31% pre-consumer recycled material by weight.
- 96% post-consumer recyclability by weight.
- Mercury-free LEDs.

LIGHT OUTPUT

Measured in desktop footcandles 15" above the worksurface.

- 98 peak footcandles
- 200 peak lumens

