

**SWIFTSPACE**

**Solo**



## Worksurface

Standard depth is 24"  
Standard lengths are  
34", 48", 66", or 90"  
Custom lengths available  
Pneumatic or height-adjustable  
worksurfaces can be added

## Visual Privacy

Semi-clear poly comes standard,  
high-pressure laminate,  
whiteboard, printed acrylic,  
sound-dampening material  
or fabric-covered tackboards  
are available for upper panels

## Wall Height

Standard heights are  
29", 41", 52", or 66"  
Panel extenders can be added for  
increased height, various material  
options available for panel extenders

## Accessory Rail

For mounting monitors,  
shelves, paper slots, and  
binder storage

## Mobile Storage

Complete line of mobile  
pedestals, storage towers, and  
lateral files available

## Accessories

Height-adjustable  
keyboard arms and trays  
available for add-on

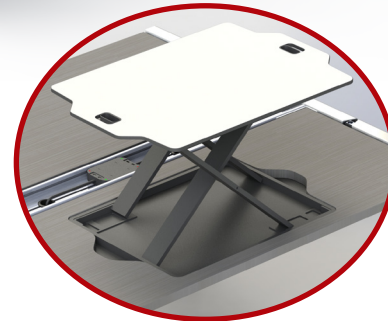
## Power and Data

Option to add power bar with 15 ft power cord for  
flexible connection to wall, floor or other stations  
For longer runs, a 4-circuit 80 amp quick connect/  
disconnect power system can be added  
Separate compartment for running up to 40 data cables

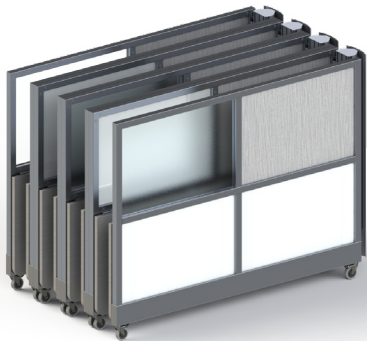
## Corner Covers and Caster Covers

Corner covers come standard  
Caster covers available for add-on

Add our new Lift to your Solo surface  
for an easy sit-stand solution



Adjusts from 29" to 44"  
Holds up to 22 pounds



## Our Solo Stations,

- Mobile all-in-one unfolding system
- No parts or pieces
- Configure your workstation immediately
- Easy to reconfigure
- No installation required
- Customizable, permanent workstations for any office system
- Storable at 15% of its original size

*Four Solo stations fully collapsed for easy storage*

For more information about our products or to schedule a demo visit [www.swiftspaceinc.com](http://www.swiftspaceinc.com)

