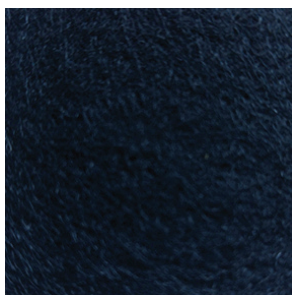


Sample Colors  
3/8" (9mm)



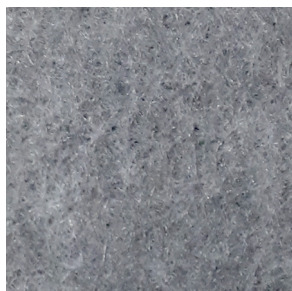
PBO9 - PURE BLACK



CGO6 - CHARCOAL GRAY



ESO7 - EBONY SLATE



DG34 - DARK GRAY



SGO4 - SILVER GRAY



CWO4 - CLASSIC WHITE



LBO1 - LIGHT BEIGE



DS10 - DESERT SAND



SD18 - SUNNY DAYS



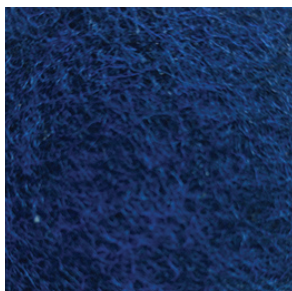
TO24 - TIGER ORANGE



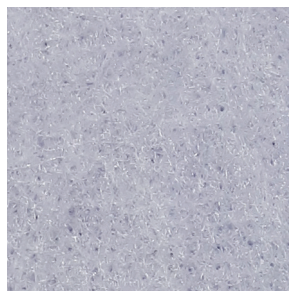
RR28 - RUBY RED



DP30 - DEEP PURPLE



MN12 - MIDNIGHT NAVY



PI14 - POLAR ICE



GA41 - GREEN APPLE



Design Driven Acoustics

#### Colors

15 standard colors.

#### Composition

100% Polyester (min 50% (+/-) recycled PET Fibre.

#### Thickness

3/8" (9mm) standard. Other thicknesses available:  
minimum order quantities apply.

#### Weight

8.5lbs (+/- 5%) for 3/8" (9mm) sheet.

#### Dimensions

48" (1219mm) x 96" (2439mm) (+/- 1mm).

#### Fire Testing

ASTM E-84 Class A / CAN ULC S102.

#### Environment

Made with recycled polyester fibre. 50% +/- of which comes from recycled water bottles which contributes to LEED MR credit of Recycled content. No VOC's.

#### Acoustics

NRC 0.75 (subject to mounting conditions) Refer to ASTM C423 test chart for specific absorption rate/frequency.

#### Applications

Wall and ceiling, tackboards, visual and acoustical privacy barriers, acoustic canopies, and other custom applications.

#### Product Variances

Variation in fiber mix and colour may occur. All products will be supplied within commercial tolerances.

#### General

Tackable, impact resistant, bacteria resistant, moisture resistant, installation friendly.